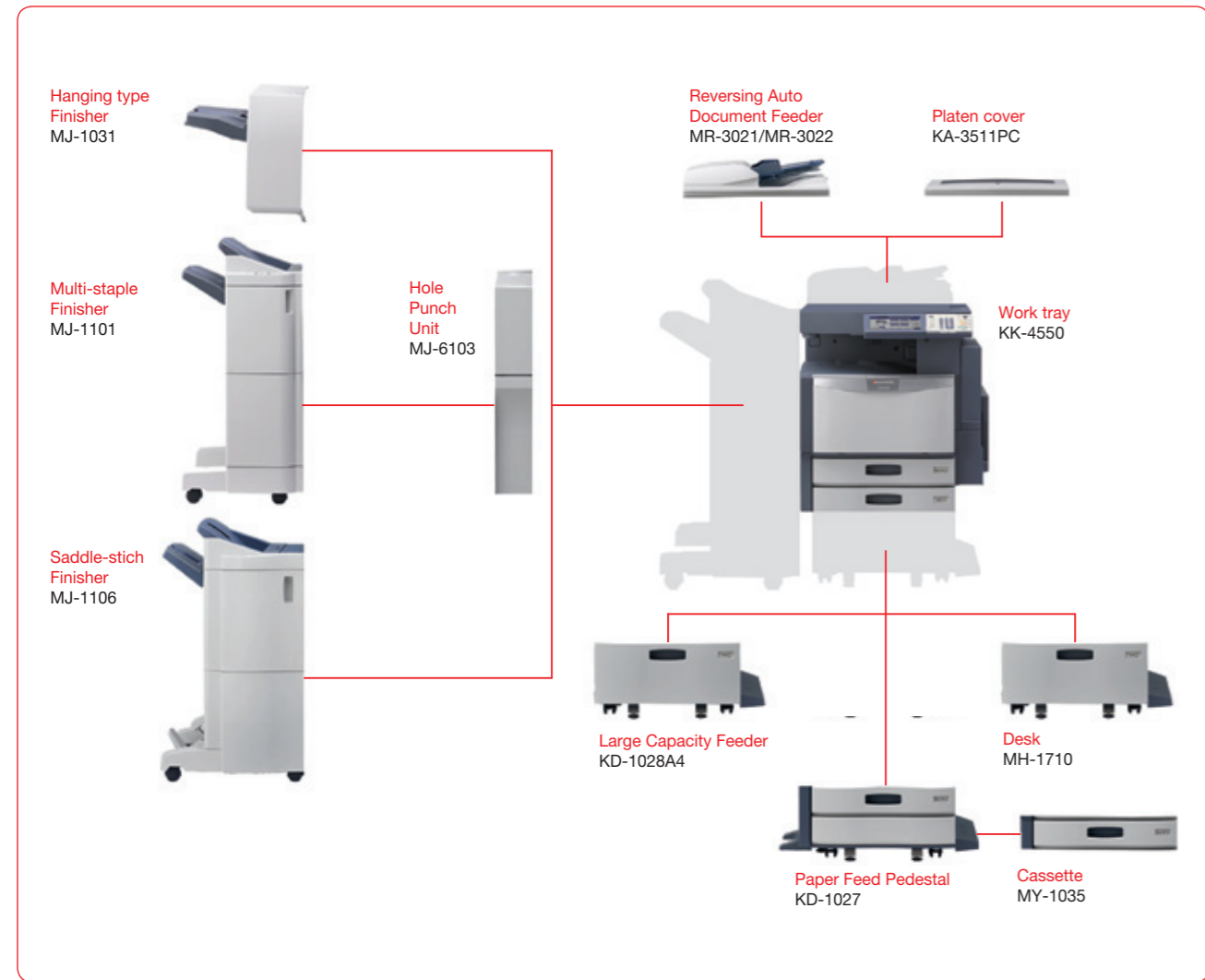


# Configuration



## System Options

- Fax Board GD-1250EU
  - e-BRIDGE ID-Gate
  - Wireless LAN Module GN-1060
  - Bluetooth Module GN-2010
  - Data Overwrite Enabler GP-1070
- IPsec Enabler GP-1080
  - Meta Scan Enabler GS-1010
  - Hard Copy Security Kit GP-1190<sup>1)</sup>
  - e-BRIDGE Re-Rite GB-1280

<sup>1)</sup> Not available at time of print

<b>General</b>	<p><b>Print &amp; Copy Speed</b> Colour: 20/25/30/35/45 ppm (A4), 10/15/16/18/22 ppm (A3) B&amp;W: 20/25/30/35/45 ppm (A4), 10/15/16/18/22 ppm (A3) Approx. 30 seconds from low-power mode Cassettes: A5R-A3, 64-256 gsm Bypass: A6R-320 x 460 mm, 64-280 gsm, banner paper (305 x 1,200 mm, 90-163 gsm)<sup>1)</sup></p> <p><b>Warm-up Time</b> <b>Paper Size &amp; Weight</b></p> <p><b>Paper Capacity</b> 2 x 550 sheets (Cassettes), 100 sheets (Bypass) Maximum: 3,700 sheets A5R-A3+, 64-256 gsm Toshiba e-BRIDGE Toshiba Secure HDD 160 GB, 1.5 GB RAM 10/100/1000 BaseT (incl. IPv6), High-Speed USB 2.0, WLAN<sup>2)</sup> (IEEE802.11b/g), Bluetooth<sup>3)</sup> 699 x 808 x 759 mm (W x D x H), ~ 121 kg</p>	<p><b>OPTIONS</b></p> <p><b>RADF – MR-3021 / MR-3022</b> 100-sheet capacity, A5R-A3, 35-157 gsm</p> <p><b>HANGING FINISHER – MJ-1031</b> 1 tray, 1,000-sheet capacity 50-sheet single position stapling A5R-A3, 64-105 gsm (stapling mode) 411 x 595 x 383 mm (W x D x H), ~ 12 kg</p> <p><b>MULTI-STAPLING FINISHER – MJ-1101</b> 2 trays, 2,250-sheet capacity 50-sheet multi-position stapling A5R-A3, 64-105 gsm (stapling mode) 535 x 598 x 1,092 mm (W x D x H), ~ 34 kg</p> <p><b>SADDLE-STITCH FINISHER – MJ-1106</b> 2 trays, 3,250-sheet capacity 50-sheet multi-position stapling 5-sheet center-folding Saddle-stitched booklets of up to 60 pages A5R-A3, 64-105 gsm (stapling mode) 617 x 603 x 1,085 mm (W x D x H), ~ 70 kg</p> <p><b>HOLE PUNCH UNIT – MJ-6103</b> Option for Finisher MJ-1101/MJ-1106 Available in 2 holes (E), 4 holes (F), 112 x 573 x 323 mm (W x D x H), ~ 7 kg</p> <p><b>PAPER FEED PEDESTAL – KD-1027</b> 550 sheets (1 cassette), A5R-A3, 64-256 gsm 623 x 643 x 320 mm (W x D x H), ~ 21 kg</p> <p><b>LARGE CAPACITY FEEDER – KD-1028A4</b> 2,500-sheet capacity, A4, 64-105 gsm 623 x 643 x 308 mm (W x D x H), ~ 27 kg</p> <p><b>OTHER OPTIONS</b> DESK – MH-1710 CASSETTE – MY-1035 FAX BOARD – GD-1250EU DATA OVERWRITE ENABLER – GP-1070 e-BRIDGE ID-GATE – TWN3XX WIRELESS LAN MODULE – GN-1060 BLUETOOTH MODULE – GN-2010 META SCAN ENABLER – GS-1010 HARD COPY SECURITY KIT – GP-1190<sup>3)</sup> IPsec ENABLER – GP-1080 e-BRIDGE Re-Rite – GB-1280</p> <p><sup>1)</sup> With Toshiba waterproof banner paper up to 230 gsm <sup>2)</sup> Optional <sup>3)</sup> Not available at time of print</p>
<b>Print</b>	<p><b>Resolution</b> <b>Page Description Languages</b> <b>Supported Systems</b></p> <p>Max. 600 x 600 dpi, 8 bit per colour channel XPS, PCL6 and PostScript 3 compatible Windows 7/Vista/XP/Server 2008/Server 2003 (32/64 bit), Windows Server 2008 R2 (64 bit), Mac OS X, Linux/UNIX, Novel Netware (NDPS), Citrix, SAP, AS/400 Auto-Colour (ACS), Colour, Twin Colour, B&amp;W Brightness, Saturation, Contrast, Colour Balance, ICC profiles management Universal Driver, Driver templates, Driver plug-ins, Hold print, Print from USB, Tandem Printing</p> <p><b>Colour Modes</b> <b>Colour Settings</b></p> <p><b>Print Functions</b></p>	
<b>Scan</b>	<p><b>Resolution</b> <b>Scan Speed</b> <b>Scan Modes</b> <b>File Formats</b></p> <p>Max. 600 x 600 dpi, 8 bit per colour channel Colour &amp; B&amp;W: Up to 57 ppm (300 dpi) Auto-Colour (ACS), Colour, Greyscale, B&amp;W JPEG, Multi/Single Page TIFF/XPS/PDF, Secure PDF, Slim PDF, Searchable PDF<sup>2)</sup> (and other editable formats like DOC, XLS, RTF, TXT, PDF/A)<sup>2)</sup> WS Scan (pull/push), Scan to USB, Scan to E-Mail, Scan to File (SMB, FTP, FTPS, IPX/SPX, local), Meta Scan<sup>3)</sup>, Scan to Box (e-Filing), TWAIN 1.7/1.8/1.9</p> <p><b>Scan Functions</b></p>	
<b>Copy</b>	<p><b>Resolution</b></p> <p>Scan: 600 x 600 dpi, 10 bit per colour channel Print: 600 x 600 dpi, 8 bit per colour channel 2,400 x 600 dpi, B&amp;W with smoothing</p> <p><b>First Copy Output time</b></p> <p>Colour: Approx. 8.4/8.4/8.4/8.4/6.8 seconds B&amp;W: Approx. 6.5/6.5/6.5/6.5/5.2 seconds 25-400% (platen), 25-200% (RADF)<sup>2)</sup></p> <p><b>Zoom</b> <b>Copy Modes</b> <b>Copy Modes</b> <b>Colour Modes</b></p> <p>Text, Text/Photo, Photo, Printed Image, Map Auto-Colour (ACS), Full Colour, Twin Colour, Mono Colour, B&amp;W Hue, Saturation, Colour Balance, 5 One-touch Modes, RGB Adjustment</p> <p><b>Colour Settings</b></p>	
<b>Fax<sup>2)</sup></b>	<p><b>Communication</b> <b>Transmission Speed</b> <b>Compression</b> <b>Network-Fax</b> <b>Incoming Fax Routing</b></p> <p>Super G3, G3 - (opt. 2<sup>nd</sup> line), Internet Fax T.37 Approx. 3 seconds per page JBIG, MMR, MR, MH Driver for Windows 7/Vista/XP (32/64 bit) To shared folders (SMB, FTP, IPX/SPX), E-mail, e-Filing</p>	
<b>System &amp; Security</b>	<p><b>Device Management</b></p> <p>e-BRIDGE Fleet Management System<sup>2)</sup>, TopAccess for remote administration and configuration</p> <p><b>System Features</b></p> <p>e-Filing document server for secure storage, document distribution and Print on Demand (1 public box, 200 user boxes), 12,060 One-touch Templates for storage of personalised settings or workflows, Scan/Fax preview, RIP-while-Print, e-BRIDGE Open Platform<sup>2)</sup>, Embedded Web Browser, Job Skip Role Based Access, LDAP support, 1,000 department codes &amp; 10,000 user codes, card reader<sup>2)</sup>, private print, standard data encryption with Toshiba Secure HDD, Data Overwrite Enabler<sup>2)</sup>, IP and MAC address filter, port filter, support of SSL and IPsec<sup>2)</sup> protocols, IEEE802.1x support, IEEE2600.1 compliant<sup>2)</sup>, Scan to secure PDF, Hard Copy Security Kit<sup>2)</sup></p> <p><b>Accounting &amp; Security</b></p>	

Productivity and paper specifications are related to a paper size of A4 and a paper weight of 80 gsm if not otherwise mentioned.

## Brochure



# Colour Manager

- Powerful protection for sensitive data thanks to the innovative Toshiba Secure Hard Disk Drive
- Copy - Scan - Print - Fax - Connect - Store
- Excellent colours enhancing your document quality
- Highly intuitive user interface
- Hassle free integration into your network

- e-STUDIO2040CSE
- e-STUDIO2540CSE
- e-STUDIO3040CSE
- e-STUDIO3540CSE
- e-STUDIO4540CSE





## Industry leading security in an easy to use, efficient, productive and cloud ready multi-functional device

The e-STUDIO4540cse series offers the most comprehensive security with the Toshiba Innovation 'Secure Hard Disk Drive'. Workgroup productivity is boosted by the easy to use interface and the wealth of functionality. Web service capabilities that includes cloud printing future proof the users investment.

**Your print workflow is future-ready – as of today**

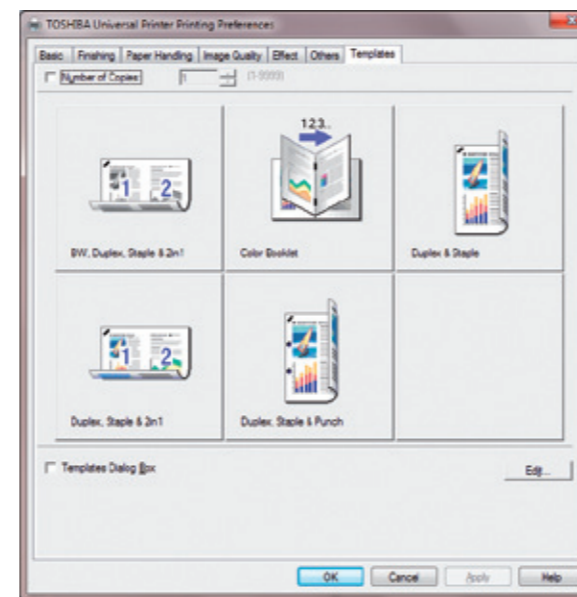
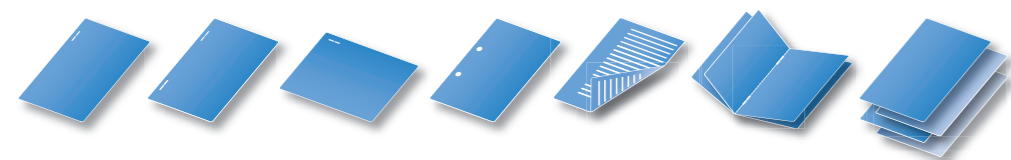
The e-STUDIO4540cse series colour systems are so easy to manage and so intuitive to handle that they unfold their full productivity potential in no time. They smoothly and safely integrate into existing network environments. Thanks to their open architecture they are ready to connect to future applications, from Mobile Printing to Cloud Computing, through embedded open platform technology.

**One platform – for everything regarding documents**

The unique Toshiba e-BRIDGE controller and software platform is the key to outstanding system performance – which can even be increased to match future application demands. Company-wide network print, scan, copy and fax functionality is available at all times. Regardless of the number of installed systems – administration and controlling of status and costs remains simple and transparent.

**Increasing productivity has never been so easy**

The new, universal printer driver simplifies the handling for every user. Several e-STUDIO systems can easily be accessed and controlled via a single driver. The large, adjustable LCD touch panel with its ergonomic user interface allows full and instant access to the impressive added values – e.g. the My Menu function with user-specific one-touch templates.



Easy-to-use printer driver with one-touch templates

**High performance for efficient productivity**

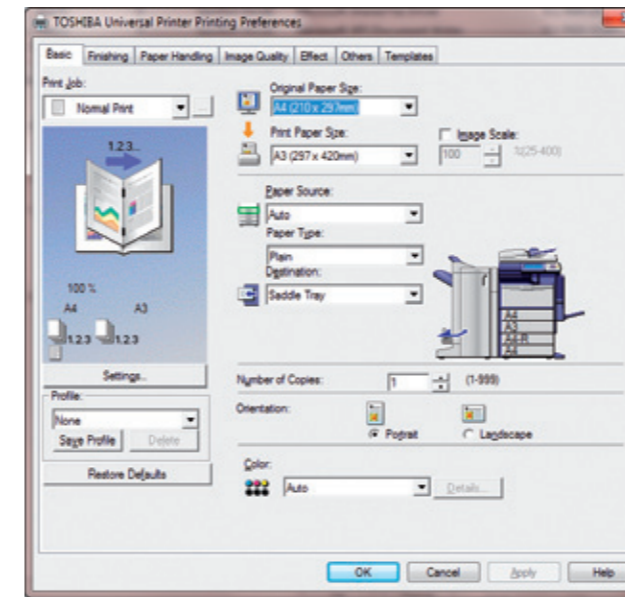
Tandem printing speeds up the output of high volume print jobs, as they can be allotted to different devices if necessary. Thanks to the flexible configuration of paper feed and paper options, even complex print jobs are mastered easily and paper weights from 64 to 256 gsm are handled without any trouble.

Every one of the five models of the e-STUDIO4540cse series comes with a large choice of paper cassettes, trays and finishing options.

Whether hole punching, stapling or booklet printing with saddle-stitch and fold – the optional finishing possibilities leave plenty of room for your creativity.

**Key benefits:**

- Five e-STUDIO colour systems matching every workgroup size.
- Printing up to 45 pages per minute, scanning up to 57 pages per minute.
- Toshiba e-BRIDGE technology for fast processing and easy software extension.
- Time-saving and intuitive handling thanks to the large LCD touch panel and a new, ergonomic printer driver.



**e-BRIDGE software – for higher productivity:**

- **e-BRIDGE Re-Rite** – the integrated text recognition creates and stores searchable and editable documents in many languages and file formats.
- **TopAccess** – a browser-based management tool for all e-BRIDGE systems.
- **e-BRIDGE Fleet Management System** – centralised administration and controlling of all Toshiba devices in your company.

## Security Enhanced

With its innovative Secure Hard Disc Drive (HDD) Toshiba has set new security standards and provides ultimate security for sensitive data. Every time you print, copy or scan, data is stored on the hard disc of the system. This data should not fall into the wrong hands and needs

**Toshiba Security**

- ✓ Secure HDD
- ✓ IP/MAC address filter
- ✓ Port filter
- ✓ Support of SSL protocol
- ✓ Support of IPsec<sup>1)</sup> protocol
- ✓ Role Based Access Control
- ✓ IEEE802.1X compliant
- ✓ IEEE2600.1 compliant<sup>2)</sup>

<sup>1)</sup> with IPsec Enabler  
<sup>2)</sup> with Data Overwrite Kit

powerful protection. Until now high-level security in most cases also meant a considerable loss of performance. But thanks to Toshiba's Secure HDD this is something of the past. The 256-bit AES encryption happens in near real-time and the encryption key is stored on the hard disc drive itself. Furthermore, the Toshiba Secure HDD knows which device it has been built into and requires the system to authenticate itself against the hard disc before allowing the data to be accessed. If this authentication fails, the encryption key will be deleted, guaranteeing that your data is safe.



While in the past invalidating the data on a hard disc at the end of a products lifetime was extremely time-consuming, Toshiba's innovative Secure HDD allows you to do this within just a few seconds.

Every colour system of the e-STUDIO4540cse series not only features the Toshiba Secure HDD, but also offers you a large range of supplementary security measures. With e-BRIDGE ID Gate, for example, you have the possibility to control access and user rights via a contactless card reader and prevent unauthorised usage.

## Future-proof sustainability

Caring for the environment and its resources is part of Toshiba's tradition – starting with the choice of materials all the way to recycling issues. The colour systems of the e-STUDIO4540cse series comply with international environmental protection standards, operate pleasantly silent as well as energy-efficient.

Materials have been tested for environmental friendliness and can be recycled hassle-free. Many components of the devices are already made of recycled plastic or are biomass-derived.

